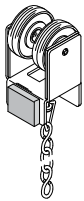
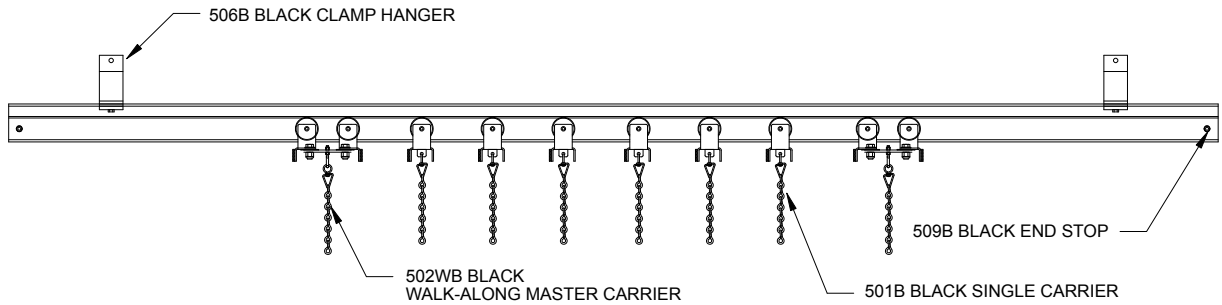
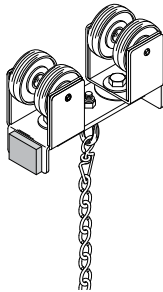


MODEL No. 501WB BLACK COMPLETE WALK-ALONG TRACK



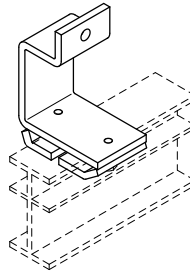
No. 501B BLACK SINGLE CARRIER

2 urethane-tired sealed ball bearing wheels riveted to plated steel body with heavy-duty hook, swivel and 6" trim chain. Nylatron glide strips and rubber bumper reduce friction and noise. Black finish.



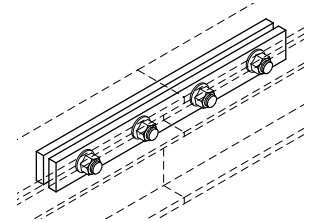
No. 502WB BLACK WALK-ALONG MASTER CARRIER

2 single carriers pivot on steel connecting plate with heavy-duty hook, swivel and trim chain. Urethane-tired wheels. Black finish.



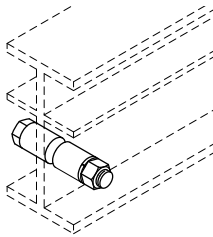
No. 506B BLACK CLAMP HANGER

Formed steel bracket for suspending track. Track clamps to bracket with offset clips. Black finish.



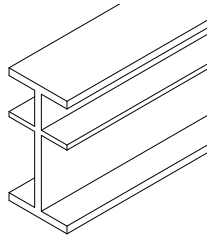
No. 507B BLACK SPLICE

Steel plates align and lock track sections together. Track must be straight at joint. Black finish. 1 pair pictured.



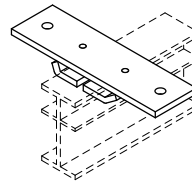
No. 509B BLACK END STOP

Bolt with steel spacers to prevent carriers from traveling beyond desired location. Black finish. 2 pair required for overlapping tracks.



No. 510-B TRACK

6063-T5 extruded aluminum 1-5/8" wide x 3-1/4" high, .187" thick. 20' and 24' stock lengths. Class 1 black anodized.



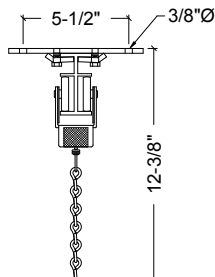
No. 531B BLACK FLUSH CEILING HANGER

Steel plate mounts flush to ceiling. Track clamps to bracket with offset clips. Black finish. For use on walk-along tracks only.

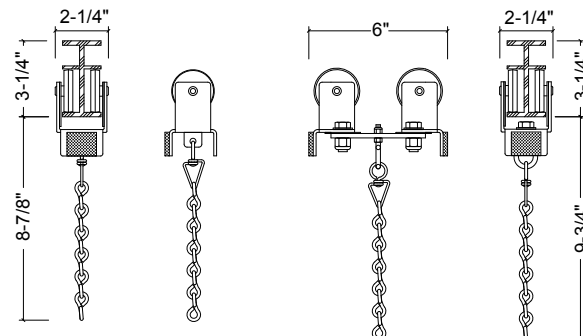
501WB Black COMPLETE Walk-Along Track Standard Items

- 501B Black Single Carrier
- 502WB Black Master Carrier
- 506B Black Clamp Hanger¹
- 507B Black Splice²
- 509B Black End Stop
- 510-B Black Track**

- 1 substitute 531B for ceiling mount.
- 2 track lengths and splices supplied as required from stock sizes.



No. 531B BLACK FLUSH CEILING HANGER



No. 501B BLACK SINGLE CARRIER AND 502WB BLACK WALK-ALONG MASTER CARRIER