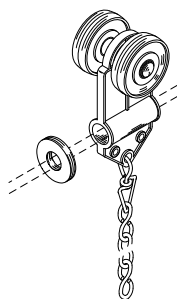
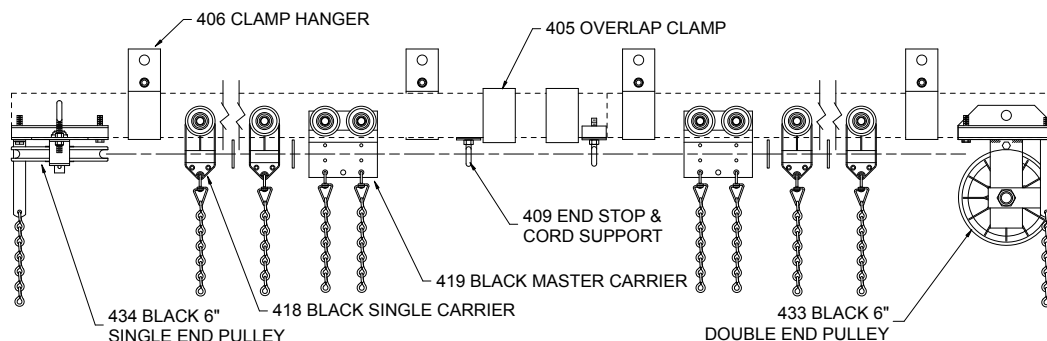
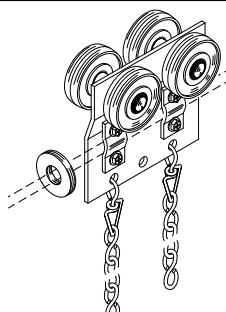


MODEL No. 418S HEAVY-DUTY STRAIGHT TRACK



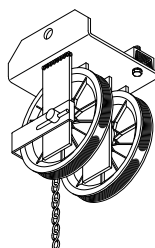
No. 418 BLACK SINGLE CARRIER

2 urethane-tired ball bearing wheels riveted to black Super Tough nylon body with heavy-duty hook, swivel, and 6" trim chain for curtain attachment. Supplied with 1 No. 431 rubber bumper. Black finish.



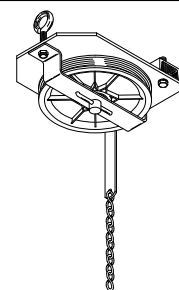
No. 419 BLACK MASTER CARRIER

4 urethane-tired ball bearing wheels riveted to steel body. 2 clamps provided for anchoring operating line or cable. Supplied with 1 No. 431 rubber bumper. Black finish. 1 pair required for overlapping tracks.



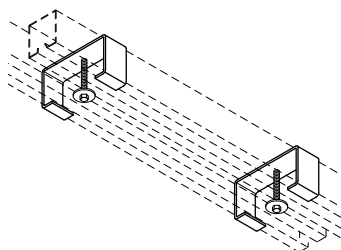
No. 433 6" BLACK DOUBLE END PULLEY

6" diameter Nylatron GS sheaves with shielded ball bearings. Steel housing clamps to underside of track. Chain bracket for securing offstage curtain edge. Grooved for up to 1/2" operating line. Black finish.



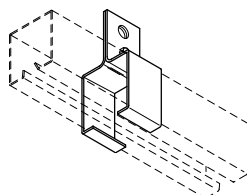
No. 434 6" BLACK SINGLE END PULLEY

6" diameter Nylatron GS sheave with shielded ball bearing. Steel housing clamps to underside of track. Chain bracket for securing offstage curtain edge. Grooved for up to 1/2" operating line. Black finish.



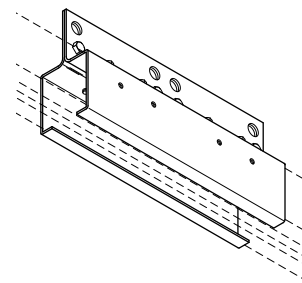
No. 405 OVERLAP CLAMP

Formed steel clamps to align track at overlap. Zinc plated. 1 set pictured.



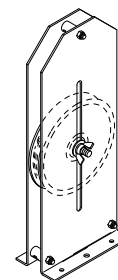
No. 406 CLAMP HANGER

Formed steel brackets clamp to track. Adjusts to any position. Suspend track with welded chain or wire rope. Zinc plated. 1 pair pictured.



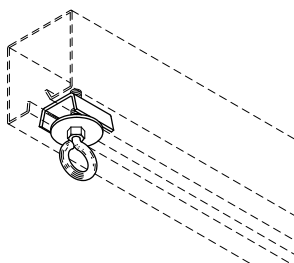
No. 407 SPLICE

Formed steel brackets align and lock track sections together. Zinc plated. 1 pair pictured.



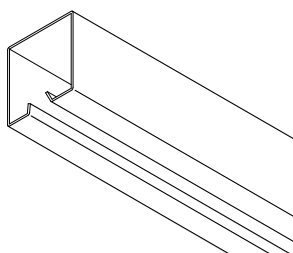
No. 432, BLACK 6" ADJUSTABLE FLOOR BLOCK

6" diameter Nylatron GS sheave with sealed precision ball bearings in heavy-duty steel housing with 9" vertical adjustment. Grooved to accept up to 1/2" operating line. Black finish.



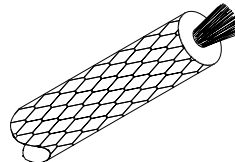
No. 409 END STOP & CORD SUPPORT

Steel clamp with eye to support operating line and prevent carriers from traveling beyond desired location. Zinc plated. 1 pair required for overlapping tracks.



No. 410S TRACK

14 gauge galvanized steel, roll-formed to 2-5/8" wide x 2-3/4" high. 16', 20', 24', and 26' stock lengths.



No. 414 BLACK OPERATING LINE

3/8" diameter black polyester braided over Dyneema core for manual operation.

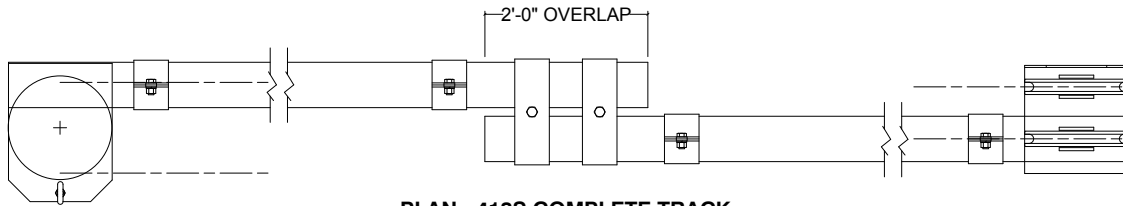
418A COMPLETE Bi-Parting Track Standard Items

- 418 Black Single Carrier
- 419 Black Master Carrier
- 433 Black 6" Double End Pulley
- 434 Black 6" Single End Pulley
- 405 Overlap Clamp^{1,2}
- 406 Clamp Hanger²
- 407 Splice^{2,3}
- 432 Black 6" Adj. Floor Block
- 409 End Stop¹
- 410S Track³
- 414 Black Operating Line

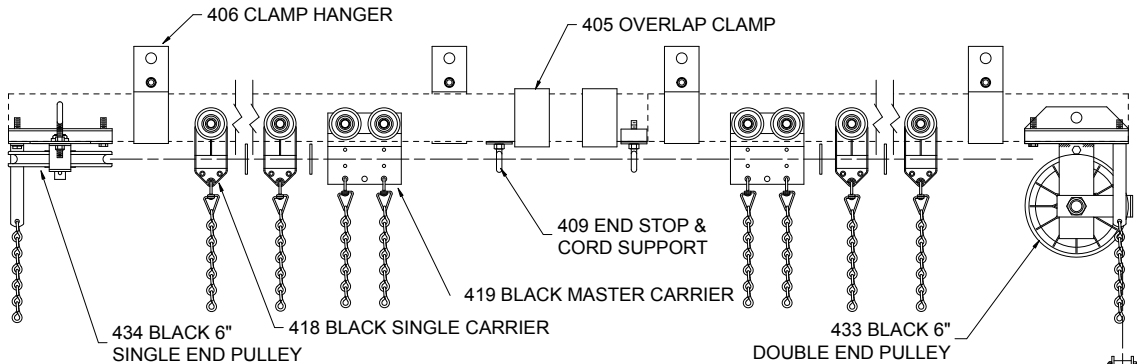
- 1 for bi-parting curtains only.
- 2 not supplied for ceiling mount.
- 3 track lengths and splices supplied as required from stock sizes.



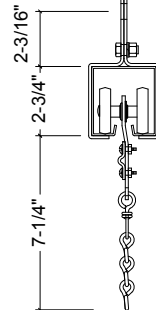
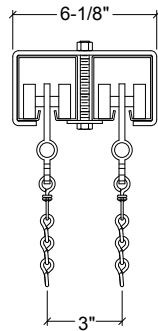
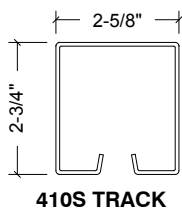
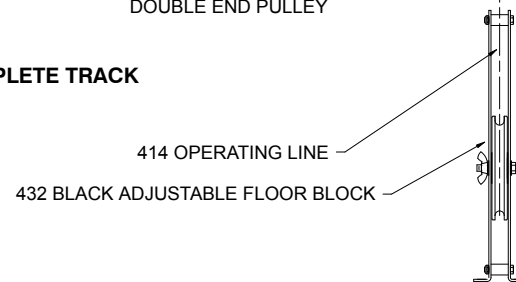
MODEL 418S TRACK



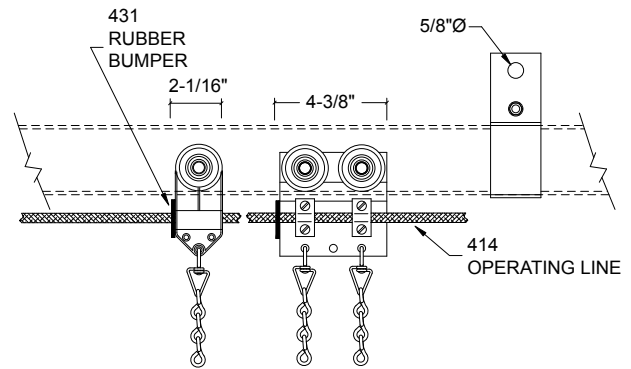
PLAN - 418S COMPLETE TRACK



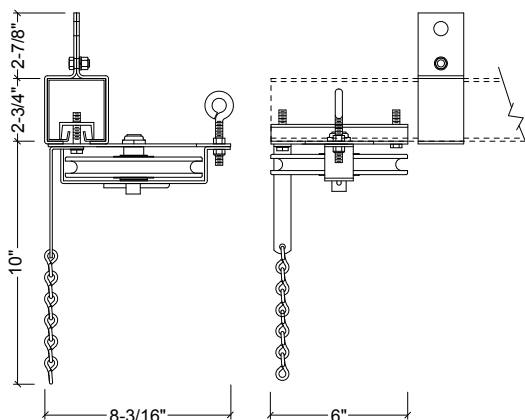
ELEVATION - 418S COMPLETE TRACK



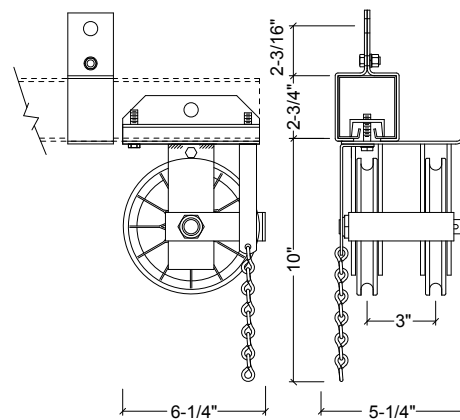
TRACKS AT CENTER OVERLAP



418 BLACK SINGLE CARRIER AND 419 BLACK MASTER CARRIER



434 BLACK 6" SINGLE END PULLEY



433 BLACK 6" DOUBLE END PULLEY