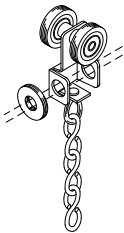
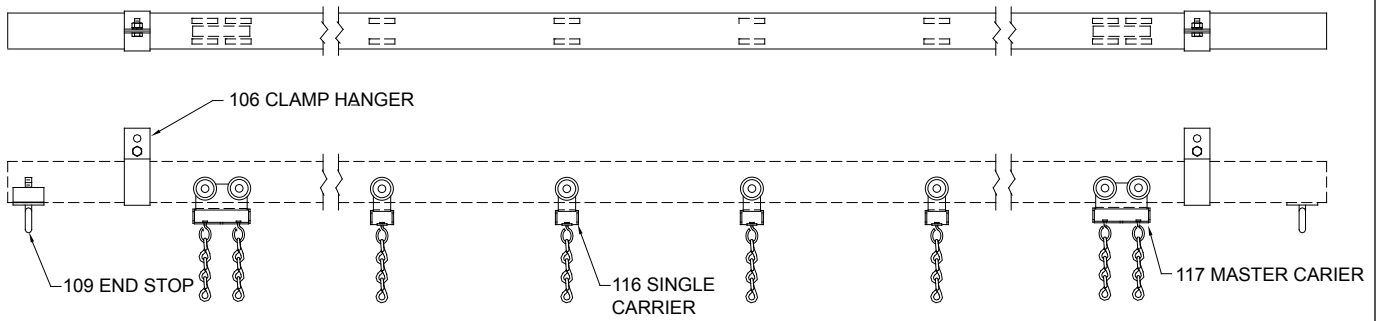
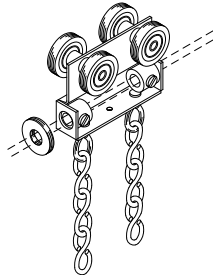


MODEL No. 116W COMPLETE WALK-ALONG STEEL TRACK



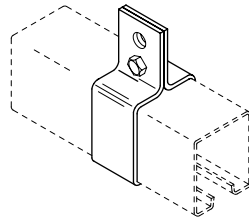
No. 116 SINGLE CARRIER

2 nylon-tired shielded ball bearing wheels riveted to steel body with swivel hook and trim chain. Supplied with 1 No. 130 rubber bumper. Zinc plated.



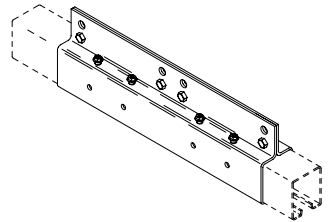
No. 117 MASTER CARRIER

4 nylon-tired shielded ball bearing wheels riveted to steel body with 2 swivel hooks and trim chains. Supplied with 2 rope clamps and 1 No. 130 rubber bumper. Zinc finish. 1 pair required.



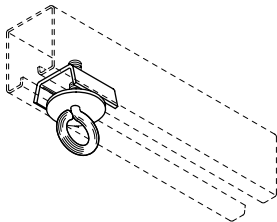
No. 106 CLAMP HANGER

Formed steel brackets clamp to track. Adjusts to any position. Suspend track with welded chain or wire rope. Zinc plated. 1 pair pictured.



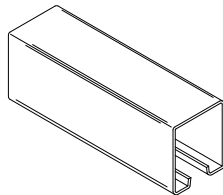
No. 107 SPLICE

Formed steel brackets align and lock track sections together. Zinc plated. 1 pair pictured.



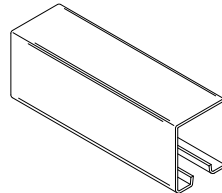
No. 109 END STOP & CORD SUPPORT

Steel clamp with eye to support operating line and prevent carriers from traveling beyond desired location. Zinc plated. 1 pair required.



No. 110A TRACK

Mill finish 6063-T5 extruded aluminum 1-3/4" wide x 2" high, .080" thick. 20' and 24' stock lengths.



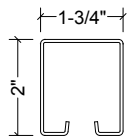
No. 110S TRACK

16 gauge galvanized steel, roll-formed to 1-3/4" wide x 2" high. 8', 10', 12', 16', 18', 20', 24', and 26' stock lengths.

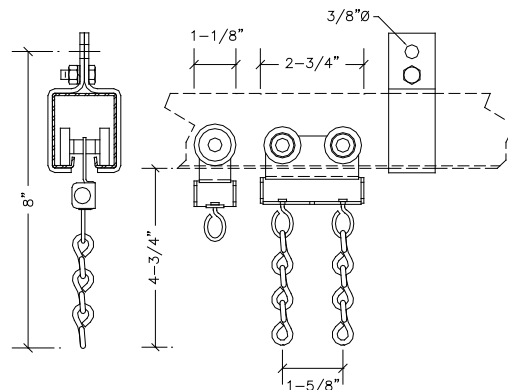
116W COMPLETE Walk-Along Track Standard Items

- 116 Single Carrier
- 117 Master Carrier
- 106 Clamp Hanger¹
- 107 Splice^{1,2}
- 109 End Stop
- 110S Track²

1 not supplied for ceiling mount.
2 track lengths and splices supplied as required from stock sizes.
For aluminum substitute 110A for 110S.



**110A TRACK
110S TRACK**



116 SINGLE CARRIER AND 117 MASTER CARRIER