

700 SERIES LIGHT-DUTY CURVED TRACK INSTALLATION INSTRUCTIONS

**PLEASE READ INSTRUCTIONS THOROUGHLY
BEFORE BEGINNING.**

The 700 Series Track is a light-duty I-beam style suitable for curved or straight curtains up to 40 feet. This Series is for walk-along use only and cannot be rigged for cord operation. A 4'-0" minimum is suggested for ease of operation and for optimum life.

A. GENERAL INSTRUCTIONS

1. Before raising track into position, determine location of hangers. Install end stop (709) at one end of the track.
2. Place track either on the floor or on sawhorses in the configuration of the finished track. If track needs to be spliced, please refer to the section on splices in "Special Instructions."
3. Install hangers (706 or 711) evenly along the entire run of the track starting adjacent to the end. Refer to recommended spacing provided. Additional hangers should be installed on curves and others may be required due to site conditions.
4. The 700 Series may also be suspended with wire rope or welded link chain. Use attachment method appropriate to application and as determined by a qualified person.
5. For COMPLETE Tracks, one single carrier (701, 716, or 728) is provided per foot of track and one pair of master carriers (702, 717, or 729) are provided, one for each end of curtain. Install single and master carriers on track. Finally, install one end stop (709) on open end of track to captivate single and master carriers.
6. The curtain may now be attached to the carriers.

B. CEILING MOUNT INSTALLATION

1. After laying out the track, use a plumb line or laser to locate positions of the ceiling hangers relative to the track. Use appropriate attachment methods for the individual job conditions. Before installing ceiling hangers (711) make sure that the ceiling is parallel to the floor. Shims may need to be installed to compensate for irregularities.
2. After the hangers are installed, raise the track in sections and attach to the ceiling hangers. In many cases, ceiling hangers can be installed onto the track, then raised to the ceiling for mounting of the hanger.
3. Install single and master carriers per the above.

C. MISCELLANEOUS

Splices:

1. In order to have a smooth operating track it is important that the track splices are installed properly and carefully. Make sure that the ends of the track are smooth and no ragged edges are protruding.
2. Whenever possible, splices should be located on straight

sections of track. If track must be spliced on a curve it is necessary to interrupt the radius in that location with a short straight section of track (4" minimum) to accommodate the splice.

3. A drill fixture (707FX) is available from the factory to facilitate field drilling of splices for the 700 Series track.

Pivot Devices: Pivot devices are not available from the factory and are not to be used with the 700 Series Track. .

RECOMMENDED TRACK SUPPORT SPACING Using 706 Clamp Hanger or 711 Ceiling Hanger (in feet)		
Curtain Weight Per Carrier (pounds)	706 Hanger	711 Ceiling Clamp
2	4	4
3	3	4
4	3	3.5

The user is cautioned that H & H Specialties Inc. cannot guarantee the accuracy of the data presented in this table for every situation. It is the customer's responsibility to determine the suitability of H & H Specialties' products for any given application, taking into account the specific requirements, the environment of use, and any possible peculiarities of the application.

DISCLAIMER

This product is designed for moving curtains or, in some cases, scenery.

NONE OF THE ITEMS DESCRIBED HEREIN ARE DESIGNED, INTENDED OR WARRANTED FOR THE USE OF LIFTING OR TRANSPORTING PEOPLE OR OTHER LIVING OBJECTS.

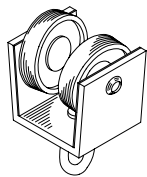
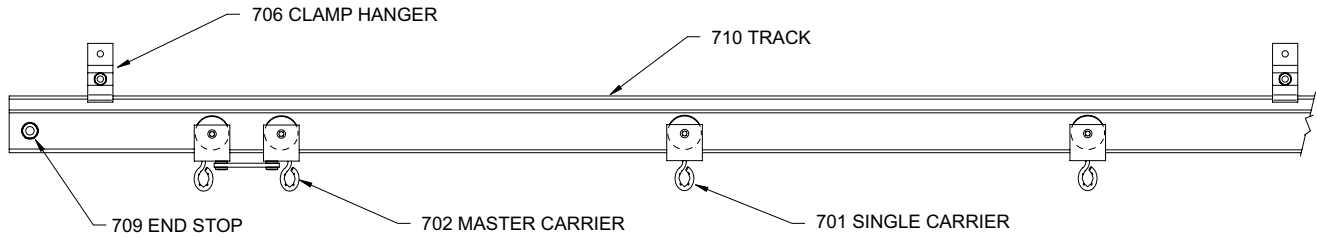
H & H Specialties Inc. makes no representation of the suitability of any product for any application unless specific design drawings are made by the factory and the products are installed in precisely the manner detailed by our design staff.



700 SERIES LIGHT-DUTY CURVED TRACK

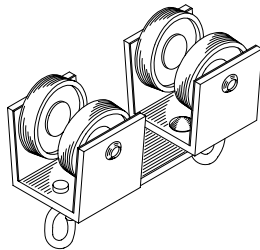
COMPLETE TRACK MODEL NUMBERS

701A
716A
728A



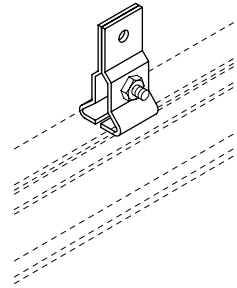
No. 701 SINGLE CARRIER

2 Delrin wheels riveted to extruded aluminum body with swivel hook. Nylatron glide strips reduce friction and noise.



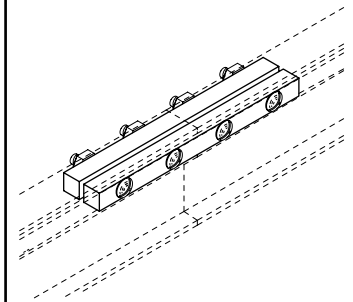
No. 702 MASTER CARRIER

2 Delrin wheel assemblies with swivel pivot on steel connecting plate. 1 pair recommended for each walk-along curtain.



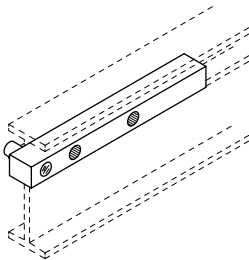
No. 706 CLAMP HANGER

Formed steel brackets clamp to track. Adjusts to any position. Suspend track with welded chain or wire rope. 1 pair pictured.



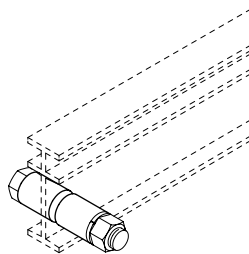
No. 707 SPLICE

Steel plates align and lock track together. 1 pair pictured.



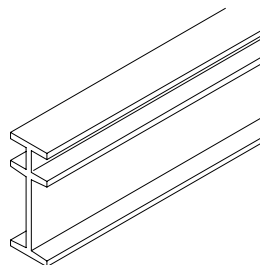
No. 707FX SPLICE DRILL FIXTURE

Hardened tool steel drill fixture for field drilling of track for 707 splices.



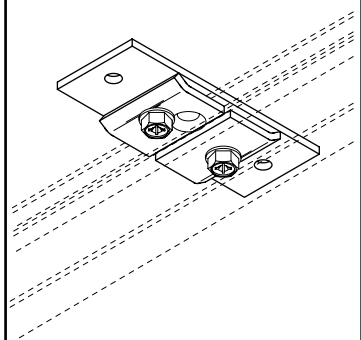
No. 709 END STOP

Bolt with steel spacers to prevent carriers from traveling beyond desired location. 1 pair required for each track.



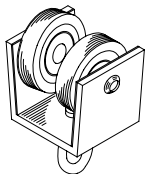
No. 710 TRACK

Mill finish 6063-T5 extruded aluminum 5/8" wide x 1-11/16" high, .094" thick. 20' stock length.



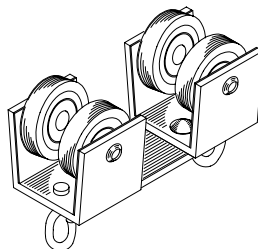
No. 711 CEILING HANGER

Steel plate mounts flush to ceiling. Track clamps to bracket with offset clips.



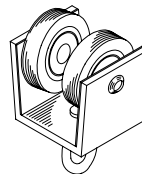
No. 716 SINGLE CARRIER

Nylon-tired shielded ball bearing wheels riveted to extruded aluminum body with swivel hook. Nylatron glide strips reduce friction and noise.



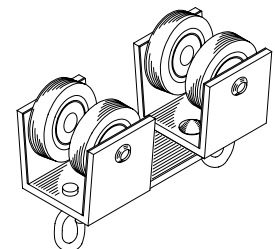
No. 717 MASTER CARRIER

2 nylon-tired shielded ball bearing wheel assemblies with swivel pivot on steel connecting plate. 1 pair recommended for each walk-along curtain.



No. 728 SINGLE CARRIER

Neoprene-tired shielded ball bearing wheels riveted to extruded aluminum body with swivel hook. Nylatron glide strips reduce friction and noise.



No. 729 MASTER CARRIER

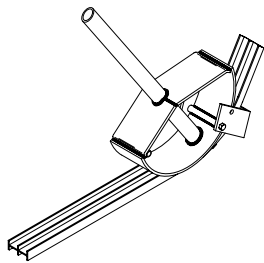
2 neoprene-tired shielded ball bearing wheel assemblies with swivel pivot on steel connecting plate. 1 pair recommended for each walk-along curtain.

TRACK BENDING TOOLS



No. 712 TRACK BENDER

Steel tool designed for manual bending of aluminum tracks. Must be anchored to floor or stationary table.



No. 713 BENDING TOOL

Heavy steel tool designed for manual, on-the-job bending of aluminum tracks.

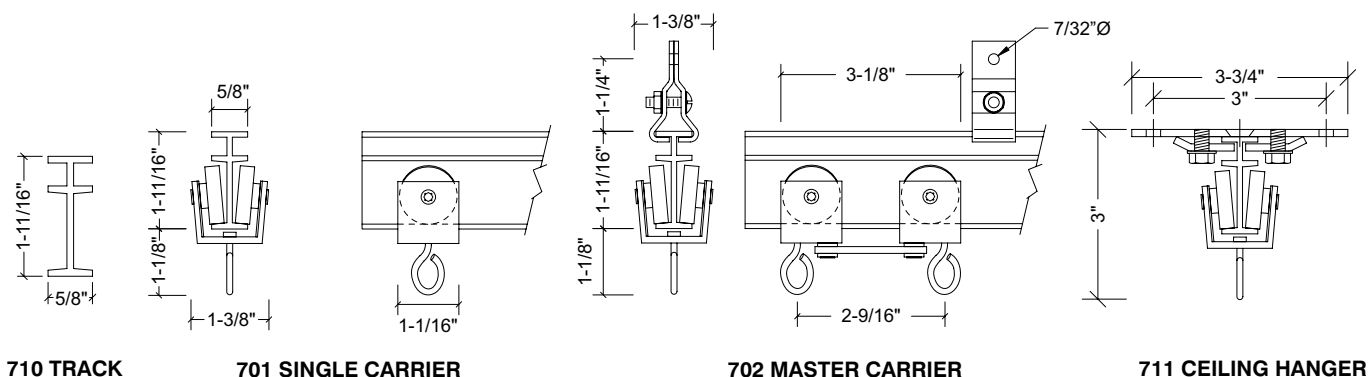
700 SERIES COMPLETE TRACK COMPONENT GUIDE

PART No.	DESCRIPTION	701A	716A	728A
701	Single Carrier	•		
702	Master Carrier	•		
706	Clamp Hanger	•	•	•
707*	Splice	•	•	•
709	End Stop	•	•	•
710*	Track	•	•	•
711	Ceiling hanger	**	**	**
716	Nylon B.B. Single Carrier		•	
717	Nylon B.B. master Carrier		•	
728	Neoprene B.B. Single Carrier			•
729	Neoprene B.B. Master Carrier			•

* Track lengths and splices supplied as required from stock sizes.

** For ceiling mounted applications, No. 711 provided in lieu of No. 706 Clamp hanger. When ordering, please specify whether track is ceiling mounted or suspended.

700 SERIES TRACK



GENERAL SPECIFICATIONS: LIGHT-DUTY CURVED TRACK

Provide **Model 701A** as manufactured by H & H Specialties Inc., South El Monte, CA.

Track shall be 1-11/16" I-beam, with 5/8" top, intermediate and bottom flanges, extruded from mill finish 6063-T5 aluminum. Provide unspliced in lengths up to 20'.

Suspend track with two-piece clamp hanger formed from 14 gauge steel. Install end stop at each track end. Where lengths exceed 20', connect tracks with 4" long, two-piece splicing clamp of cold finished steel.

Provide single carriers, spaced on 12" centers, constructed of two Delrin wheels fastened parallel to extruded aluminum carrier body with swivel hook for attachment of curtain. Attach Nylatron wear strips at contact points between carriers and track to minimize friction and noise.

Master carriers shall be two connected assemblies pivoting on a steel connecting plate.

All steel components shall be zinc plated to resist corrosion.