

100 SERIES STANDARD DUTY STRAIGHT TRACK INSTALLATION INSTRUCTIONS

**PLEASE READ INSTRUCTIONS THOROUGHLY
BEFORE BEGINNING.**

A. BI-PARTING TRAVEL BATTEN INSTALLATION

1. Place track either on the floor or on sawhorses under the batten to which it will be attached. Make sure the tracks are overlapped the proper amount, 2'-0" is considered standard. Stage left track is always placed downstage. If track needs to be spliced, please refer to the section on splices in "Special Instructions."

2. Attach track at overlap with 1 set (two 105) overlap clamps approximately 6" from each end. Install hangers (106) evenly along the entire run of the track starting adjacent to end pulleys. Refer to recommended spacing provided. Additional hangers may be required due to site conditions. If the track is on the floor, installer may wish to attach the track to the batten and raise to a comfortable working level. Refer to step 5 for attachment instructions.

3. Attach end stops (109) to the onstage (center) ends of the track. From the offstage ends of the track, install one master carrier (102 or 117) into each track. Next, install single carriers (101 or 116) into each track behind the master (1 single carrier per foot of track).

4. Decide from which end the curtain will be operated. This is the side that the double end pulley (103) will be attached. Attach pulley to end of track with chain bracket off to the side. After attaching the double end pulley, go to the opposite side of the track and install the single end pulley (104). Make sure that end pulleys are installed in a manner similar to that indicated on the plan view detail in attached drawings.

5. Attach the track to the batten with either wire rope, welded link chain, or pipe clamps. Use attachment method appropriate to application. When using pipe clamps, a center pipe support (126) should be used to eliminate twisting through the overlap. **IMPORTANT!** Make sure track is parallel to floor before final attachment. **WARNING! After attaching track to batten, make sure to balance the line set and leave at a comfortable working level.**

6. Attaching a rope clamp to one end of operating line, reeve the **OTHER** end of line through the master carrier, single carriers, and through center sheave of double end pulley. When using 116 carriers make sure that a rubber bumper is installed between each carrier when reeving operating line.

7. Reeve line through the floor block (108) or the sand bag tension pulley (643) and back over the other sheave of the double end pulley.

8. Next, the line travels toward the single end pulley. Reeve the line through the end stop & cord support, master carrier, single carriers, and around the single end pulley. Make sure to

put rope clamps on the operating line when going through the master carrier. **CAUTION! Do not tighten at this time.** The line travels through the other end stop & cord support and terminates where it started at the first master carrier. Place the line through the master and attach the rope clamp to the operating line leaving a small tail.

9. Make sure that all the slack in the line is on the double end pulley side (side with the floor block). Also make sure that there is sufficient line remaining to reach the intended finished height.

10. Slide each of the master carriers to the onstage (center) end stops. Now tighten each of the clamps on each master carrier. Raise the track to its desired height. Check to see that the floor block or sand bag tension pulley is taking the slack out of the operating line. Operate the track to make sure everything is running smoothly. If not, go through the entire system and check to make sure the components are installed properly.

11. The curtain may now be attached to the carriers. **WARNING! After attaching the curtain, the line set must be balanced. Always use caution when working with an out-of-balance line set.**

12. Raise the curtain and track to the desired height and adjust the floor tension block until the operating line has no slack in it. If a sand bag tension pulley is used, make sure the bag is filled with dry sand (not provided with sand bag) and the bag is securely attached to the steel housing.

B. ONE-WAY TRAVEL BATTEN INSTALLATION

1. Place the track either on the floor or on sawhorses under the batten to which it will be attached. If track needs to be spliced, refer to the section on splices in "Special Instructions."

2. Install hangers (106) evenly along the entire run of the track starting adjacent to end pulleys. Refer to recommended spacing provided. Additional hangers may be required due to site conditions. If the track is on the floor, installer may wish to attach the track to the batten and raise to a comfortable working level. Refer to step 5 for attachment instructions.

3. Decide from which end the curtain will be operated. This is the side that the double end pulley (103) will be attached. Do not attach the pulley to the end of the track at this time. Attach to the opposite side of the track the single end pulley (104). Make sure that both end pulleys will be mounted in such a manner that both of the sheaves are on the same side of the track. The upstage side is preferred for cosmetic reasons.

4. From the double end pulley side of the track, install a master carrier (102 or 117) into track. Next, install single carriers (101

or 116) into track behind the master (1 single carrier per foot of track). Finally, attach the double end pulley on the track.

5. Attach the track to the batten with either wire rope, welded link chain, or pipe clamps. Use method appropriate to application. **IMPORTANT!** Make sure track is parallel to the floor before final attachment. **WARNING! After attaching track to batten, make sure to balance the line set and leave at a comfortable working level.**

6. Attach a rope clamp to one end of operating line. Reeve the **OTHER** end of the line through the master carrier, single carriers, and through the center sheave of double end pulley. When using 116 carriers, make sure that a rubber bumper is installed between each carrier when reeving operating line.

7. Reeve line through the floor block (108) or the sand bag tension pulley (643) and back over the other sheave of the double end pulley.

8. Next, the line now travels to the single end pulley. Reeve around the single end pulley and back to the master carrier. Place the line through the master carrier and attach the rope clamp to the operating line leaving a small tail.

9. Raise the track to the desired height. Check to see that the floor block or sand bag tension pulley is taking the slack out of the operating line. Operate the track to make sure everything is running smoothly. If not, go through the entire system and check to make sure the components are installed properly.

10. The curtain may now be attached to the carriers. **WARNING! After attaching the curtain, the line set must be balanced. Always use caution when working with an out-of-balance line set.**

11. Raise the curtain and track to the desired height and adjust the floor tension block until the operating line has no slack in it. If a sand bag tension pulley is used, make sure the bag is filled with dry sand (not provided with sand bag) and the bag is securely attached to the steel housing.

C. DEAD HUNG OR CEILING MOUNT INSTALLATION

Before Beginning.

1. When installing a dead hung track, a decision must be made whether to install the track in sections or as a complete unit. Basis for this decision is the ability of the installer to lift and hold the track in place. The 110S track channel weighs 1.50 pounds per foot. (30 pounds for a 20'-0" length).

2. If installing on a ceiling, make careful measurements to determine if the ceiling is parallel to the floor. If not, shim the track accordingly. Also, take careful measurements in determining structural points in the ceiling to attach the track. Use appropriate hardware to attach the track to the ceiling based on roof structure and total track loads.

3. If track needs to be spliced with ceiling splice (127), splicing is sometimes easier if done on the floor or on sawhorses. The ceiling splice is a bolt through splice and care is needed to assure that the carriers will still pass through the splice. **CAUTION! Wheels of 10 pivot device will not pass a 127**

splice.

4. On either a dead hung or ceiling installation using Model 101S or 101A, it is recommended that trim chains (135) be installed on the carriers to provide adjustment in curtain height.

Dead Hung Installation

1. Determine where the hanging points for the track will be. Use either wire rope or welded link chain to hang track. Hanging points need to be at ends adjacent to end pulleys and evenly spaced along the entire run of the track. Refer to recommended spacing provided. Additional hangers may be required due to site conditions. Hanging method must be adjustable to allow for trimming the track parallel to floor.

2. Place track on the floor or on sawhorses in the exact location that the track will be positioned. If the track is overlapped, allow 2'-0" for this purpose. Place track hangers on track under hanging points.

3. Raise track in sections and attach to hanging points. Leveling the track in sections is suggested. If the track is overlapped, remember to attach the overlap clamps after both tracks are correctly positioned. Depending on curtain material, the track may need to be hung 1-3 inches higher than its finished height to allow for fabric stretch. After the curtain has been hung for a period of time, it may need to be re-trimmed.

4. Once the track has been hung and leveled, the track is rigged the same as a batten mounted track for either one-way or bi-parting (Steps 3,4 & 6-12).

Ceiling mount

1. After determining the condition of the ceiling and its relation to the floor, lay the track on the floor or on sawhorses in the position that it will be installed. Using a plumb line, mark and drill for attachment to ceiling under each structural support to which it will be attached.

2. Use a plumb line to determine the position of the track relative to the ceiling. Raise the track and use appropriate hanging method for job conditions. Make sure the track is parallel to the floor and provisions have been made to trim for curtain stretch.

3. After the track is installed, it is rigged in the same way as a batten mounted bi-parting or one-way track. (Steps 3,4 & 6-12).

Note: Clamp hangers and overlap clamps are not provided or used with ceiling mounted COMPLETE tracks.

D. SPECIAL INSTRUCTIONS

Splicing Track

1. In order to have a smooth operating track it is important that the track splices are installed properly and carefully. Do not over tighten the fasteners.

2. Make sure that the ends of the track are smooth and no jagged edges are protruding. Filing a slight downward bevel

and rounding the corners will help form a smooth splice. If the track ends are not smooth, proper alignment may be impossible.

3. Loosen the splice and butt the track sections together in the splice. Tighten the four 1/4" splice attachment bolts (on top of splice) until the track is held loosely. **CAUTION! Do not overtighten.**

4. Tighten the 1/4" adjustment screws on the top of the track until the track is seated firmly in the splice clamp. Next, tighten the other side of the splice in the same manner. Make sure that the track ends are still butted together. **CAUTION! Do not over tighten the bolts since deformation of the track is possible.**

5. The adjustment screws on the side of the splice are used to hold the side alignment of the track. Start by turning the screws on one side of the splice until they touch the track, then do the same to the other side. Any side misalignment may be adjusted by alternately tightening or loosening various screws.

6. When the track is aligned, tighten the 1/4" splice attachment bolts together. **Caution! Make sure that the track stays in alignment as you tighten the splice.**

Pivot Devices

1. Pivot devices allow for curtains to be positioned at different angles relative to the track. The 10, 10B, 10X, and 10XB are free-wheeling units. The addition of the optional 10BK and 10BKB brake kit will prevent undesired movement of pivot along track.

2. The pivot devices are designed for either 1-3/8" O.D. tubing or 1" Sch. 40 pipe. Maximum recommended batten length is 6'-0". Make sure that the batten is the proper length for the application.

3. Install the "C" clamps in each end of the curtain batten. These are provided so that a cord may be tied between the two to aid in turning the device. The cord should be long enough so that adjustment may be done with the curtain at its proper trim.

4. **WARNING! Tracks that include pivot devices must be provided with a bolt through style end stop (111) to contain the pivot device within the track assembly.**

4. **CAUTION! Do not attempt to adjust the curtain by means of pulling on the fabric. Damage to the curtain and associated hardware may result.**

5. **CAUTION! The recommended total load on the device must not exceed 75 pounds.**

Rear Fold Guide

1. Rear fold guides (112 or 113) are used when the curtain needs to store in a pocket or a "sliding door" effect is desired.

2. The guide is attached to the carrier and is positioned offstage in relation to the carrier. Rubber bumpers are placed on each side of the guide to insure quiet operation. **Note:** The master carrier and carrier nearest the end pulley do not require a rear fold guide.

3. As the curtain is pulled open, it is pulled back into the pocket flat and does not start to fold until the carrier stops. The curtain does not billow as it moves offstage and will fold neatly in the pocket.

RECOMMENDED TRACK SUPPORT SPACING		
Using 106 Clamp Hanger (in feet)		
Curtain Weight Per Carrier (pounds)	110A	110S
2	6	8
3	6	8
4	6	7.5
5	5.5	7

For additional information, please refer to *Catalog Fourteen*, pages 62-63. For tracks 10 feet or less in length it is recommended that the track be supported at a minimum of three locations.

All recommendations stated are presented in good faith and based upon generally accepted engineering principles. The user, however, is cautioned that H & H Specialties Inc. cannot guarantee the accuracy of the data presented in this table for every situation. It is the customer's responsibility to determine the suitability of H & H Specialties' products for any given application, taking into account the specific requirements, the environment of use, and any possible peculiarities of the application.

Direct ceiling attachment of tracks has not been evaluated as the support structure, method of attachment, and attachment requirements may vary widely from project to project. A qualified person should be consulted for this application.

DISCLAIMER

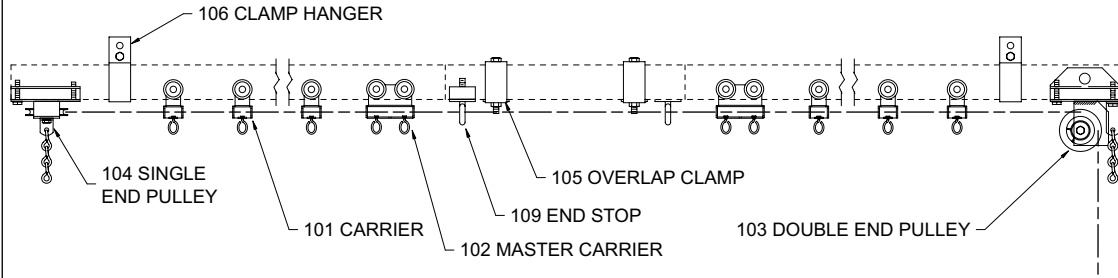
This product is designed for moving curtains or, in some cases, scenery.

NONE OF THE ITEMS DESCRIBED HEREIN ARE DESIGNED, INTENDED OR WARRANTED FOR THE USE OF LIFTING OR TRANSPORTING PEOPLE OR OTHER LIVING OBJECTS.

H & H Specialties Inc. makes no representation of the suitability of any product for any application unless specific design drawings are made by the factory and the products are installed in precisely the manner detailed by our design staff.

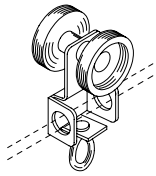


100 SERIES STANDARD-DUTY STRAIGHT TRACK



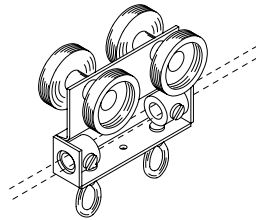
**COMPLETE TRACK
MODEL NUMBERS**
101A 116A
101S 116S
101W 116W

**BLACK
COMPLETE TRACK
MODEL NUMBERS**
101SB 116SB
101WB 116WB



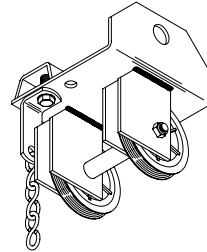
SINGLE CARRIER

2 polyethylene wheels riveted to plated steel body with swivel hook.
No. 101 - Zinc plated.
No. 101B - Black finish.



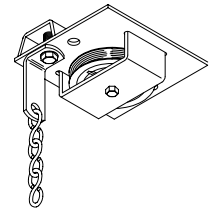
MASTER CARRIER

4 polyethylene wheels riveted to steel body with 2 swivel hooks. Supplied with 2 clamps for anchoring operating line or cable. 1 pair required for overlapping tracks.
No. 102 - Zinc plated.
No. 102B - Black finish.



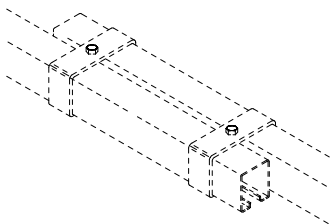
DOUBLE END PULLEY

2-1/2" diameter Nylatron GS sheaves with shielded ball bearings. Steel housing clamps to underside of track. Chain bracket for securing offstage curtain edge.
No. 103 - Zinc plated.
No. 103B - Black finish.



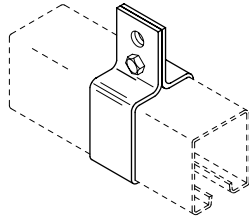
SINGLE END PULLEY

2-1/2" diameter Nylatron GS sheave with shielded ball bearing. Steel housing clamps to underside of track. Chain bracket for securing offstage curtain edge.
No. 104 - Zinc plated.
No. 104B - Black finish.



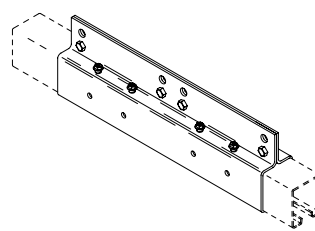
OVERLAP CLAMP

Formed steel clamps to align track at overlap. 1 set pictured.
No. 105 - Zinc plated.
No. 105B - Black finish.



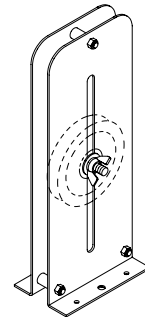
CLAMP HANGER

Formed steel brackets clamp to track. Adjusts to any position. Suspend track with welded chain or wire rope. 1 pair pictured.
No. 106 - Zinc plated.
No. 106B - Black finish.



SPLICE

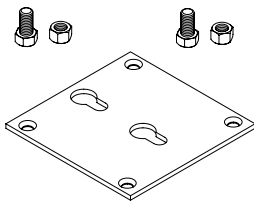
Formed steel brackets align and lock track sections together. 1 pair pictured.
No. 107 - Zinc plated.
No. 107B - Black finish.



No. 108 BLACK

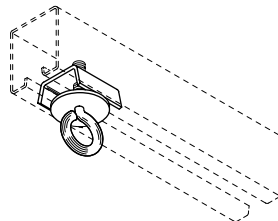
ADJUSTABLE FLOOR BLOCK

4" diameter Nylatron GS sheave with shielded ball bearing in steel housing. 9" vertical adjustment.



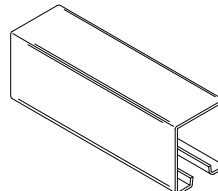
No. 108DK BLACK DETACHABLE FLOOR BLOCK KIT

7 gauge steel plate with hardware for use with No. 108 Adjustable Floor Block for quick release.



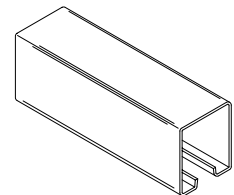
END STOP & CORD SUPPORT

Steel clamp with eye to support operating line and prevent carriers from traveling beyond desired location. 1 pair required for overlapping tracks.
No. 109 - Zinc plated.
No. 109B - Black finish.



No. 110A TRACK

Mill finish 6063-T5 extruded aluminum 1-3/4" wide x 2" high, .080" thick. 20' and 24' stock lengths.

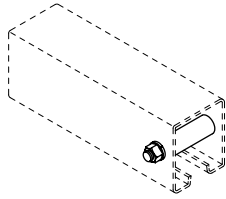


TRACK

16 gauge galvanized steel, roll-formed to 1-3/4" wide x 2" high.

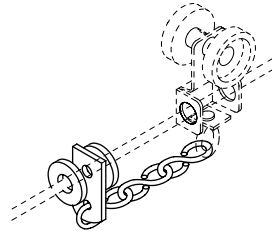
No. 110S- 8', 10', 12', 16', 18', 20', 24', and 26' stock lengths.

No. 110S-B- Semi-gloss black powder coat finish. 16', 20', and 24' stock lengths.



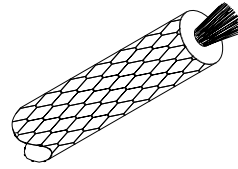
END STOP

Bolt with horizontal pipe spacer to prevent carriers from traveling beyond desired location. For use with walk-along tracks.
No. 111 - Zinc plated.
No. 111B - Black finish.



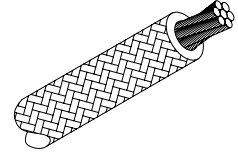
REAR FOLD GUIDE

Allows curtain to fold at offstage edges. Supplied with 1 rubber bumper.
No. 112 - for use with 1/4" operating line.
No. 112B - same as 112 in Black.
No. 113 - for use with 3/16" operating cable.
No. 113B - same as 113 in Black.
Note: Cannot be used with No. 132 Overlap Master.



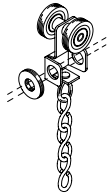
No. 114 OPERATING LINE

1/4" diameter black polyester braided over solid aramid core for manual operation.



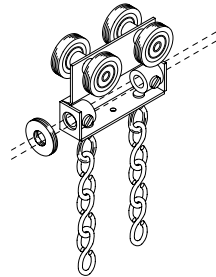
OPERATING CABLE

Black polyester jacket braided over 3/32" galvanized aircraft cable. For use with motorized tracks.
No. 115 - 3/16" diameter
No. 125 - 1/4" diameter



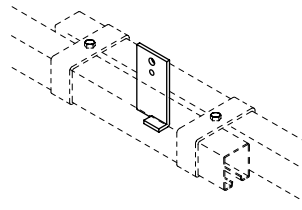
SINGLE CARRIER

2 nylon-tired shielded ball bearing wheels riveted to steel body with swivel hook and trim chain. Supplied with 1 rubber bumper.
No. 116 - Zinc plated.
No. 116B - Black finish.



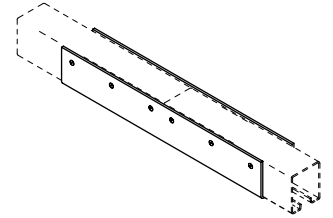
MASTER CARRIER

4 nylon-tired shielded ball bearing wheels riveted to steel body with 2 swivel hooks and trim chains. Supplied with 2 rope clamps and 1 rubber bumper. 1 pair required for overlapping tracks.
No. 117 - Zinc finish.
No. 117B - Black finish.



CENTER PIPE SUPPORT

Formed steel bracket used to support tracks at overlap.
No. 126 - Zinc plated.
No. 126B - Black finish.

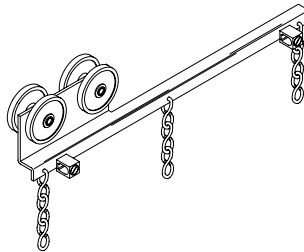


CEILING SPLICE

To align and lock track sections together on ceiling mounted tracks. 1 pair pictured.
Note: Cannot be used with No. 132 Overlap Master or No. 10 Pivot Device due to interference with the wheels.
No. 127 - Zinc plated.
No. 127B - Black finish.

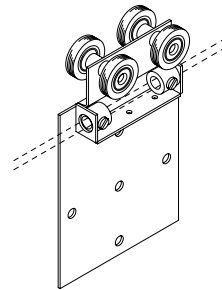


No. 130 ROUND RUBBER BUMPER
 1/8" neoprene bumper placed between carriers to reduce noise.



OVERLAP MASTER

1-3/4" O.D. nylon wheels riveted to steel body with 9" offset arm. Used to overlap curtains on continuous track. Clamps provided to secure operating line. 1 pair required for overlapping curtains.
No. 132 - Zinc plated.
No. 132B - Black finish.



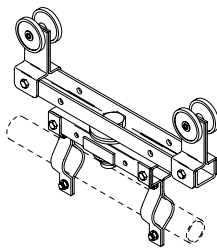
No. 134 BLACK SIDE MASKING MASTER CARRIER

No. 117 Master Carrier with 3-3/4" x 5-3/4" steel plate for attaching side masking frame. Supplied with 2 rope clamps.



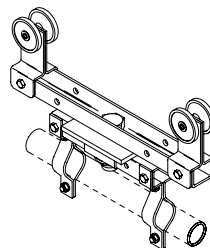
TRIM CHAIN

3 links No.10 single jack chain added to carriers to provide 3" of curtain height adjustment.
No. 135 - Zinc plated.
No. 135B - Black finish.



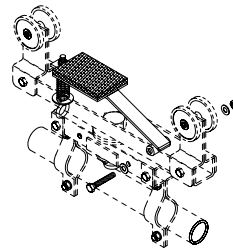
PIVOT DEVICE

Heavy steel construction with nylon wheels. Supplied with brackets for 1-3/8" O.D. pipe or tubing (6' max. recommended length). Allows masking draperies to be rotated to any angle.
 Working Load Limit: 75 pounds.
No. 10 - Zinc plated.
No. 10B - Black finish



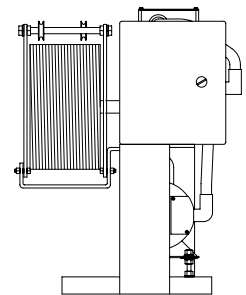
INDEXING PIVOT DEVICE

Pivot device with special plate to index rotation at 22-1/2 degree increments. Supplied with brackets for 1-3/8" O.D. pipe or tubing (6' max. recommended length).
 Working Load Limit: 75 pounds.
No. 10X - Zinc plated.
No. 10XB - Black finish.



BRAKE KIT

Spring equipped arm with neoprene pad. Add to pivot device to prevent undesired movement along track.
No. 10BK - Zinc plated.
No. 10KB - Black finish.



No. 454 Curtain Machine

See pages 50-61 for curtain machines



GENERAL SPECIFICATIONS:

STANDARD-DUTY STRAIGHT TRACK

Provide **Model 101S** as manufactured by H & H Specialties Inc., South El Monte, CA.

Track shall be 16 gauge galvanized steel, roll-formed to 1-3/4" wide X 2" high with continuous slot in bottom. Provide unspliced in lengths up to 26'.

Suspend track with two-piece clamp hanger formed from 11 gauge steel. Provide 2' overlap at center, rigidly separated by two overlap clamps. Install end stop with cord support at each overlapping track end. Where lengths exceed 26', connect tracks with 12" long, two-piece splicing clamp of 12 gauge steel.

Provide single carriers, spaced on 12" centers, constructed of two polyethylene wheels fastened parallel to formed steel carrier body with swivel hook for attachment of curtain.

Master carriers shall be 4-wheel assemblies with formed steel bodies and two swivel hooks each. Connect to operating line with two machined steel cord clamps captured within each body.

Single and double end pulleys shall clamp securely to the underside of the track channel and shall contain 2-1/2" diameter sheaves enclosed in steel housings to prevent operating line from escaping the grooves. Nylatron GS sheaves shall be molded around shielded and greased ball bearings and grooved to accommodate up to 1/4" operating line.

Provide floor block in 12 gauge steel housing containing 4" Nylatron GS shielded ball bearing sheave. Sheave axle shall lock at any point within 9" vertical slots to allow tension adjustment of operating line.

Black operating line shall be 1/4" diameter, stretch-resistant rope with spun polyester outer jacket braided over solid aramid core.

All steel components shall be zinc plated to resist corrosion.

100 SERIES COMPLETE TRACK COMPONENT GUIDE

For COMPLETE tracks supplied with aluminum, substitute 110A for 110S.

PART No.	DESCRIPTION	101S	101W	116S	116W
101	Single Carrier	•	•		
102	Master Carrier	•	•		
103	Double End Pulley	•		•	
104	Single End Pulley	•		•	
105	Overlap Clamp	•		•	
106	Clamp Hanger	•	•	•	•
107*	Splice	•	•	•	•
108	Black Adjustable Floor Block	•		•	
109	End Stop & Cord Support	•	•	•	•
110S*	Track	•	•	•	•
114	1/4" Operating Line	•		•	
116	Nylon B.B. Single Carrier			•	•
117	Nylon B.B. Master Carrier			•	•

* Track lengths and splices supplied as required from stock sizes.

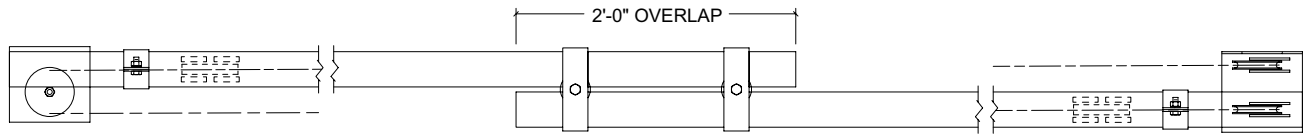
100 SERIES BLACK COMPLETE TRACK COMPONENT GUIDE

Note: Aluminum track is not offered in black.

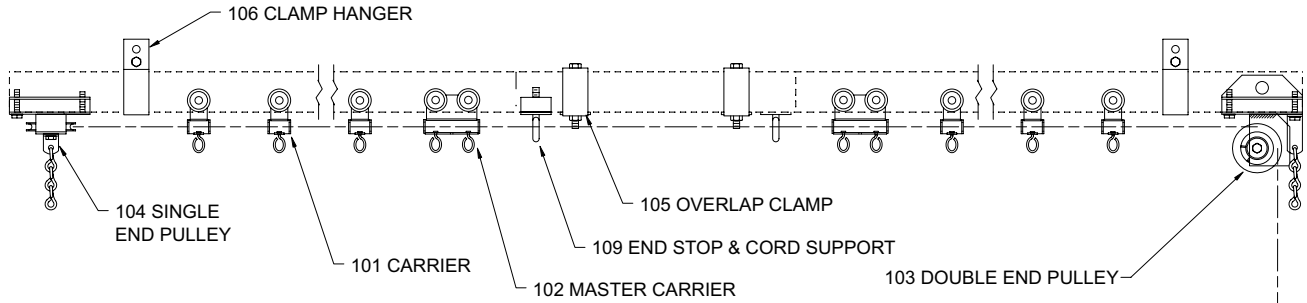
PART No.	DESCRIPTION	101SB	101WB	116SB	116WB
101B	Black Single Carrier	•	•		
102B	Black Master Carrier	•	•		
103B	Black Double End Pulley	•		•	
104B	Black Single End Pulley	•		•	
105B	Black Overlap Clamp	•		•	
106B	Black Clamp Hanger	•	•	•	•
107B*	Black Splice	•	•	•	•
108	Black Adjustable Floor Block	•		•	
109B	Black End Stop & Cord Support	•	•	•	•
110S-B*	Black Track	•	•	•	•
114	1/4" Operating Line	•		•	
116B	Black Nylon B.B. Single Carrier			•	•
117B	Black Nylon B.B. Master Carrier			•	•

* Track lengths and splices supplied as required from stock sizes.

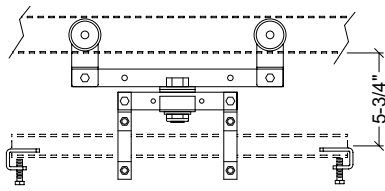
100 SERIES TRACK



PLAN - MODEL 101S COMPLETE TRACK



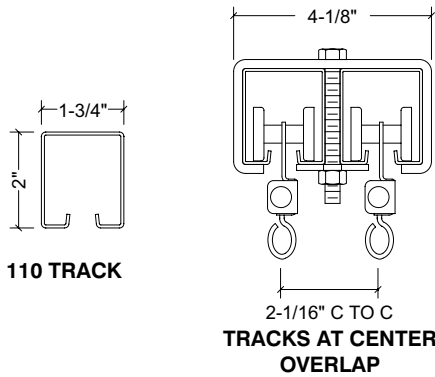
ELEVATION - MODEL 101S COMPLETE TRACK



10 PIVOT DEVICE

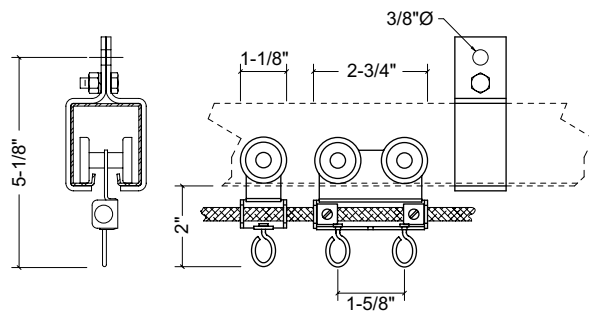
114 OPERATING LINE

108 BLACK ADJUSTABLE FLOOR BLOCK

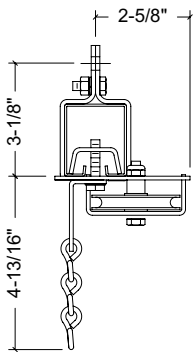


110 TRACK

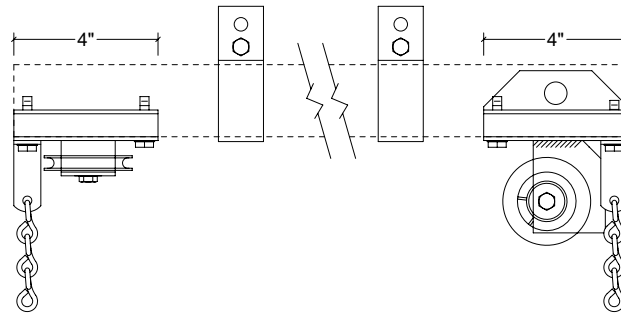
TRACKS AT CENTER OVERLAP



101 SINGLE CARRIER AND 102 MASTER CARRIER



104 SINGLE END PULLEY



103 DOUBLE END PULLEY